

TREES IN TROUBLE

A film by award winning filmmaker Andrea Torrice

SAVING AMERICA'S URBAN FORESTS

Music by Brian Lovely

Edited by Matt Dibble

HOST A SCREENING!

The documentary **TREES IN TROUBLE: SAVING AMERICA'S URBAN FORESTS** is available for community screenings and for classroom use.

The filmmaker is also available for screening events and discussions.

A DOCUMENTARY VIDEO AND WEB RESOURCE

Produced by Andrea Torrice

RELEASE DATE: Spring 2016. Now airing on PBS

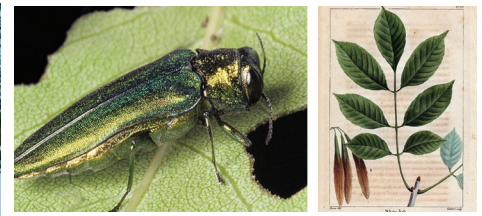
TREES IN TROUBLE: SAVING AMERICA'S URBAN FORESTS is a new documentary film that explores the rich history and importance of our community forests, as well as examines some of the threats they now face from invasive pests. Through stories of everyday people on the frontlines of change, the film demonstrates how community-wide efforts can help save and protect our community forests for future generations. 30 minutes.

TO SEE CLIPS FROM THE FILM AND OTHER RESOURCES GO TO: www.treesintrouble.com

"Trees in Trouble is an urgent call...to protect our treasured urban street and park trees from extinction...a must see for teachers, parks managers, municipal officials, and people who love trees."

— DR. RUTHERFORD H. PLATT JR. PROFESSOR EMERITUS OF GEOGRAPHY, UNIVERSITY OF MASSACHUSETTS-AMHERST, AUTHOR, THE ECOLOGICAL CITY

TREES IN TROUBLE was made possible through the support of: the Ohio Humanities a state affiliate of the National Endowment for the Humanities, the Stephen H. Wilder Foundation, the Young Family Foundation and the TREE Fund. It was sponsored by the Center for Independent Documentary and the Media Working Group.



**WINNER
JOHN ASTON
WARDER AWARD**



"Screening the film really helped get all the stakeholders in our community talking about why we need to "rethink" how we view our community trees."

— Carl Stewart, BOULDER, COLORADO

SOME OF THE PEOPLE IN THE FILM



DAN HERMS



JENNY GULICK



COUNCILMEMBER
YOUNG



SCOTT BEUERLEIN

CONTACT US FOR MORE INFORMATION | 513.751.7050 | www.treesintrouble.com